

BASS Spring Meeting 2017

Friday June 2, 2017

Flanders Meeting & Convention Center Antwerp



Sleeping with the enemy cardiovascular consequences of sleep apnea



Venue

Flanders Meeting &
Convention Center Antwerp
Koningin Astridplein 26
2018 Antwerpen

Registration

www.belsleep.org

Fee

BASS members: *free*
Non-members: *40 euro*

Accreditation

is pending

How to reach

Mind the low emission zone!

www.slimnaarantwerpen.be

Public transport: FMCCA adjoins the Central Station. Metro (Diamant), tram and bus stops are nearby. www.belgianrail.be www.delijn.be

Bicycle and car parks: www.elisabethcenter.be

Sponsors



Belgian
Association for
Sleep research and
Sleep medicine

www.belsleep.org

Photo source: ZOO Antwerp



Program

Arrival and registration with coffee	08:30 - 09:00
Welcome and introduction <i>Johan Verbraecken, president of the BASS</i>	09:00 - 09:15
Morning Session	
Chairs: Johan Verbraecken – Ilse De Volder	
Coronary artery disease, stroke and sleep apnea <i>Yüksel Peker, Istanbul, Turkey</i>	09:15 – 09:45
Atrial fibrillation and OSA: where heart and mind meet <i>Carolina Lombardi, Milan, Italy</i>	09:45 – 10:15
Coffee/tea break	10:15 – 10:45
Chairs: Marie Bruyneel - Dries Testelmans	
Resistant or refractory hypertension and OSA <i>Sophie Crinion, Dublin, Ireland</i>	10:45 – 11:15
Cardiovascular outcome of CPAP and MRA therapy in OSA <i>Wojciech Trzepizur, Angers, France</i>	11:15 – 11:45
Sleep in apes and monkeys <i>Kristel De Vleeschouwer & Nikki Tagg, Antwerp Zoo, Belgium</i>	11:45 – 12:30
Walking lunch	12:30 – 13:30
Afternoon Session	
Chairs: Elke De Valck - An Mariman	
Cardiovascular complications of OSA in young children <i>Sonia Scaillet, HUDERF, Brussels</i>	13:30 – 14:00
Measures of vascular health in OSA: prognostic crystal ball or Pandora's box ? <i>Bharati Shivalkar, UZ Antwerpen</i>	14:00 – 14:30
Coffee/tea break	14:30 – 15:00
Chairs: Bertien Buyse - Alain Volckaert	
The ERS Task Force Consensus on Central Sleep Apnea <i>Johan Verbraecken, UZ Antwerpen</i>	15:00 – 15:30
ASV therapy : where to go? Belgian Research Network on Central Sleep Apnea <i>Dries Testelmans, UZ Leuven</i>	15:30 – 16:00
End	16:00



Photo source: ZOO Antwerp

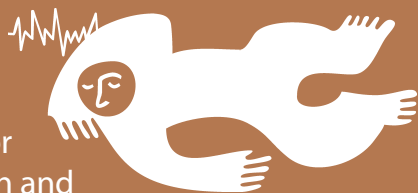
BASS Spring Meeting 2017

Sleeping with the enemy :
cardiovascular consequences of sleep apnea

Friday 02/06/2017

Elisabeth Center, Antwerp

Belgian
Association for
Sleep research and
Sleep medicine



www.belsleep.org

